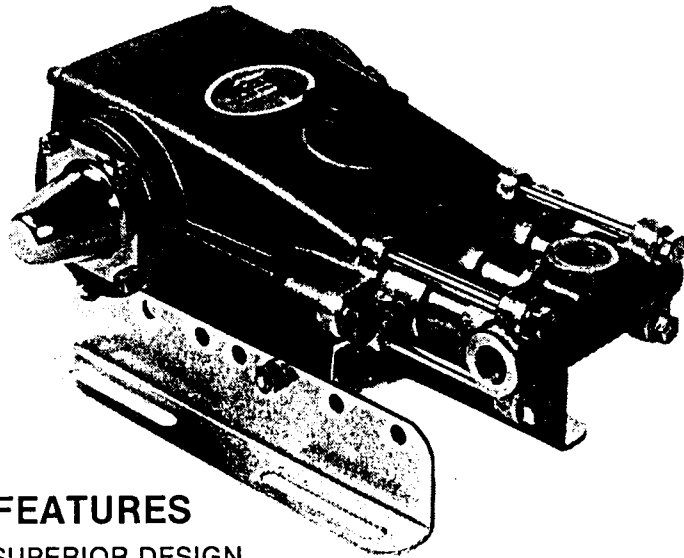




**Piston
Pump
Model**

320

SPECIFICATIONS



FEATURES

SUPERIOR DESIGN

- Triplex piston design gives smoother fluid flow.
- Wetted cups and floating pistons are lubricated and cooled by pumped fluid for long cup life.
- Mechanically actuated inlet valves give strong lift and easy prime.
- All stainless steel discharge valves are newly designed for quieter operation.
- Oil bath crankcase assures proper lubrication.
- Lubricated inlet seal prevents leakage and prolongs life.
- Side discharge ports make plumbing simple and compact

QUALITY MATERIALS

- Wear surfaces of pumping section are hard chrome plated stainless steel for maximum durability and abrasion resistance.
- Chrome plated, brass manifold is strong and corrosion resistant.
- Stepped stainless steel piston rod and slinger allows chromed sleeve to be replaced from front of pump.
- Heavy duty connecting rods are made of high quality Zamak bearing material for strength.
- Forged, chrome-moly crankshaft gives unmatched strength and surface hardness.
- Oversized crankshaft bearings with greater loading capacity mean longer bearing life.

EASY MAINTENANCE

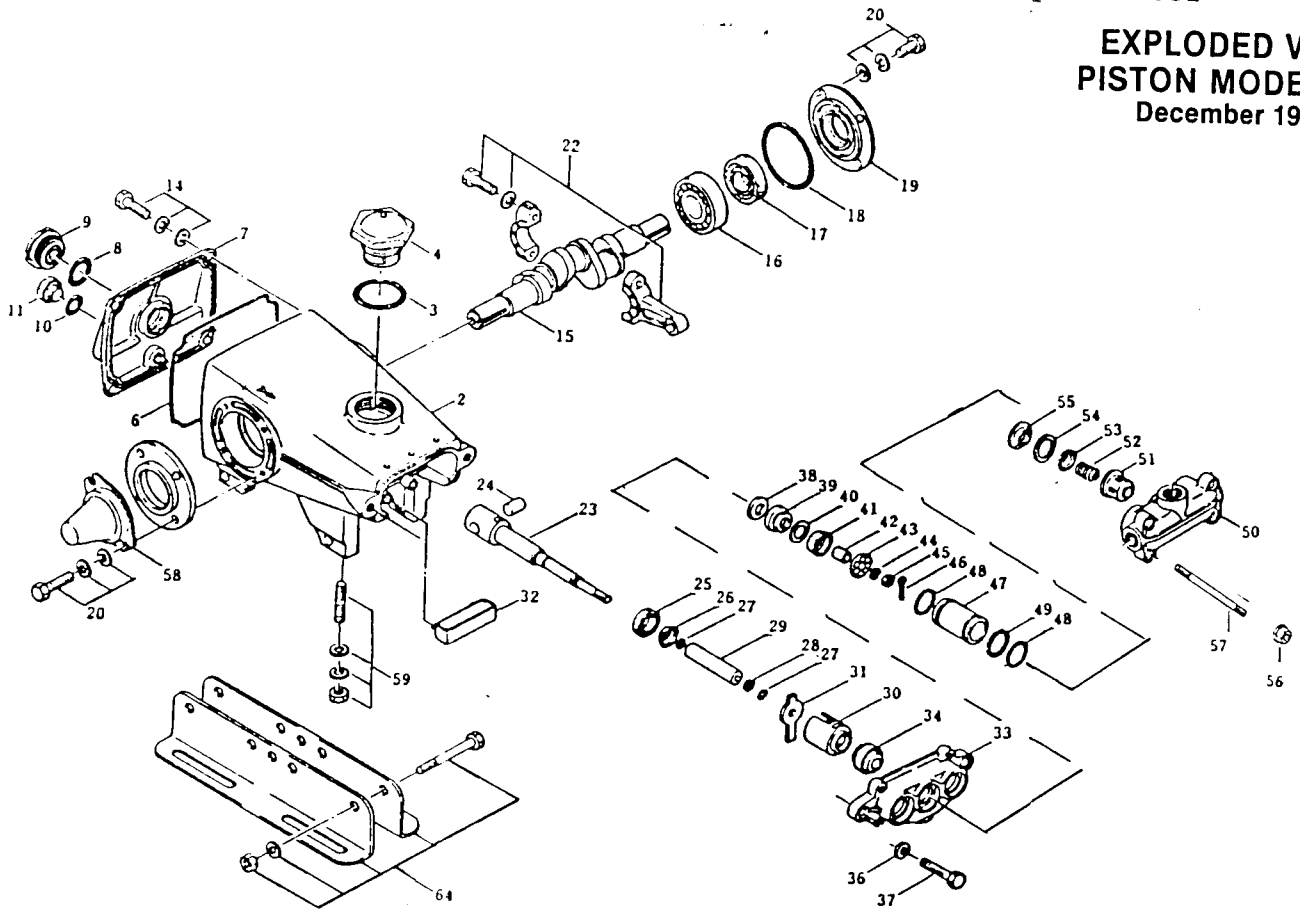
- All wet end wear surfaces are easily serviced without entering crankcase, requiring less time and effort.
- Wear parts are available in handy kits.
- Routine lubrication checks are the only maintenance required on this precision built pump.
- Dual lubrication offers additional protection

	U.S. Measure	Metric Measure
Volume	5 G.P.M.	(19 L/M)
Discharge Pressure	1500 P.S.I.	(105 BAR)
Max. Inlet Pressure	- 8.5 to 40 P.S.I.	(- 0.6 to + 2.8 BAR)
RPM	1000 RPM	(1000 RPM)
Bore	0.866"	(22 mm)
Stroke	0.669"	(17 mm)
Crankcase Capacity	21 oz.	(0.6 L)
Maximum Fluid Temperature	160°F	(71°C)
Inlet Ports (1)	1/2" NPT	(1/2" NPT)
Discharge Ports (2)	1/2" NPT	(1/2" NPT)
Pulley Mounting	Either side	(Either side)
Shaft Diameter	0.787"	(20 mm)
Weight	16.6 lbs.	(7.5 kg)
Dimensions	12.4" x 9.6" x 5.3"	(315 x 244 x 134 mm)

HORSEPOWER REQUIREMENTS						
Flow		PRESSURE			MOTOR PULLEY SIZE Using 1725 RPM Motor & Std. Pump Pulley O.D.	
		PSI 1000	PSI 1200	PSI 1500		
GPM	L/M	BAR 70	BAR 85	BAR 105	RPM	Pulley O.D.
5.0	19	3.5	4.2	5.2	1000	4.6
4.0	15	2.8	3.3	4.2	800	3.7
3.0	11	2.1	2.5	3.1	600	2.8
DETERMINING THE PUMP R.P.M. $\frac{\text{Rated G.P.M.}}{\text{Rated R.P.M.}} = \frac{\text{"Desired" G.P.M.}}{\text{"Desired" R.P.M.}}$						
DETERMINING THE REQUIRED H.P. $\frac{\text{GPM} \times \text{PSI}}{1460} = \frac{\text{Electric Brake}}{\text{Horsepower Required}}$						
DETERMINING MOTOR PULLEY SIZE $\frac{\text{Motor Pulley O.D.}}{\text{Pump R.P.M.}} = \frac{\text{Pump Pulley O.D.}}{\text{Motor R.P.M.}}$						
<small>Note: Consult engine manufacturer when using gas or diesel engine</small>						

WORLD LEADER IN TRIPLEX HIGH PRESSURE PUMPS

**EXPLODED VIEW
PISTON MODEL 32
December 1982**



PARTS LIST

ITEM	PART NO.	DESCRIPTION	QTY.	ITEM	PART NO.	DESCRIPTION	QTY.
2	43338	✓ Crankcase	1	43	29588	✓ Piston Retainer	3
3	14177	✓ O-ring, Oil Filler Cap (Buna-N)	1	44	27006	✓ Conical Washer-S.S. (M6)	3
4	43211	✓ Oil Filler Cap	1	45	27000	✓ Slotted Nut-S.S. (M6)	3
6	43340	✓ Cover Seal, O-section	4	46	14158	✓ Cotterpin	3
7	43339	✓ Crankcase Cover	1	47	43768	✓ Cylinder	3
8	20285	✓ O-ring, Oil Gauge	1	48	43835	✓ Cylinder (Unchromed)	3
9	43214	✓ Oil Gauge <i>use 43987</i>	1	48	43781	✓ O-ring, Cylinder (Buna-N)	6
10	23170	✓ O-ring, Drain Plug	1	49	11337	✓ O-ring, Cylinder (Viton)	6
11	25625	✓ Drain Plug	1	49	21986	✓ Back-Up Ring, Cylinder (Teflon)	3
14	92520	✓ Sems Comb Head Screw (M6 x 20)	4	50	43770	✓ Discharge Manifold	1
15	43342	✓ Crankshaft	1	51	43780	✓ Valve Spring Retainer	3
16	14480	✓ Bearing	2	52	43251	✓ Valve Spring <i>use 43751</i>	3
17	43222	✓ Oil Seal (Buna-N)	2	53	43721	✓ Valve	3
18	43343	✓ Case Seal, O-Section	2	54	43793	✓ O-ring, D.V.S. (Buna-N)	3
19	43344	✓ Oil Seal Case	2	54	43791	✓ O-ring, D.V.S. (Viton)	3
20	92519	✓ Sems Comb Head Screw (M6 x 16)	8	55	43779	✓ Discharge Valve Seat	3
22	43345	✓ Connecting Rod	3	56	101804	✓ Hex Flanged Nut (M8)	4
23	43775	✓ Piston Rod	3	57	85661	✓ Stud (M8 x 100)	4
24	43351	✓ Rod Pin	3	58	43364	✓ Shaft Protector - 43364.100 ✓	1
25	43527	✓ Oil Seal (Buna-N)	3	59	30243	✓ Direct Mounting Kit	4
26	25327	✓ Barrier Slinger	3			Stud (M8 x 120)	4
27	25392	✓ O-ring, Sleeve (Buna-N)	6		12489	✓ Washer	4
28	28771	✓ O-ring, Sleeve (Viton)	6		15845	✓ Spring Washer	4
29	29003	✓ Back-Up Ring, Sleeve (Teflon)	3		81109	✓ Hex Nut (M8)	4
29	25299	✓ Sleeve	3	64	30611	✓ Angle Mounting Kit	4
	28460	✓ Sleeve (Unchromed)	3		28499	✓ Angle Rail	2
30	43530	✓ Seal Retainer	3		30900	✓ Hex Cap Screw (5/16 x 4-1/2-18)	2
31	43532	✓ Wick	3		30920	✓ Split Lock Washer (5/16 U.S.)	2
32	43355	✓ Oil Pan	1		30910	✓ Hex Nut (5/16 U.S.)	2
33	43767	✓ Inlet Manifold	1		30633	✓ Pulley Assembly	1
34	30315	✓ Prrrrrm-A-Lube Seal <i>25153 12.1.82 DAT</i>	3		30057	✓ Key (M6)	1
	30325	✓ Prrrrrm-A-Lube Seal (Viton)	3		30058	✓ Pulley 8" AB w/2 Set Screws	1
36	12503	✓ Spring Washer	2		30659	✓ Mounting Kit (Rail, Pulley, S.P., Key)	1
37	80288	✓ Hex Cap Screw (M10 x 30)	2		30305	✓ Seal Kit - Prrrrrmalube	1
38	43533	✓ Inlet Valve	3		30312	✓ Sleeve & Seal Kit Prrrrrm	1
39	43787	✓ Bac-Cup Piston	3		30857	✓ Piston Kit - Bac cup	1
40	43788	✓ Bac-Cup Ring (Teflon)	3		30858	✓ Cup Kit - Bac cup	1
41	43792	✓ Bac-Cup (Buna-N) *	3		30859	✓ Valve Kit	1
41	43789	✓ Bac-Cup (Viton)	3				
42	27983	✓ Piston Spacer	3				

30992 machined Pist. Kit (see 323)